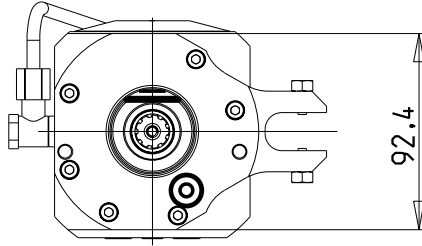
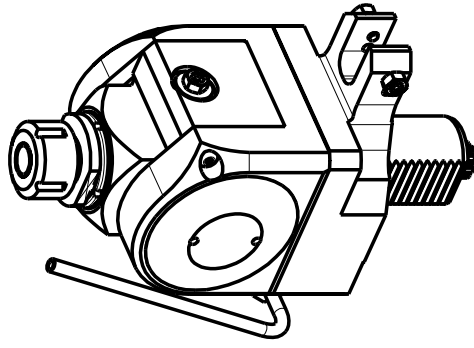
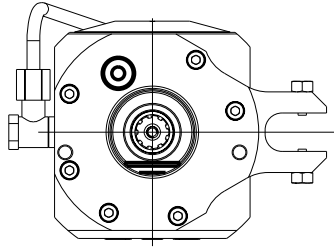


versione dx
right version
version rechts



versione sx
left version
version links

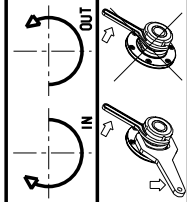


Cod. MT

versione dx right version version rechts	versione sx left version version links	Mandrino Spindle Spindel	I	RPM	Coppia Max Max Torque Max Drehmoment	Lubrificazione est. Ext. coolant Ausseukuehlung	A	A1	D	L	CHIAVI INCLUDE Keys included Schlüssel einbegriffen
0210020_SAU	SAU0700020	ER20	1:1	4000	40Nm	X	84.16	-	-	-	CHUB36 CHSTER20
0210025_SAU	SAU0700025	ER25	1:1	4000	40Nm	X	85.66	-	-	-	CHUB36 CHSTER25
0211617_SAU	SAU0701617	Ø16x17	1:1	4000	40Nm	X	-	65	16	17	CH_VTCROCE_M08
0212219_SAU	SAU0702219	Ø22x19	1:1	4000	40Nm	X	-	66	22	19	CH_VTCROCE_M10
0211905_SAU	SAU0701905	Ø3/4"x3/4"	1:1	4000	40Nm	X	-	65	3/4"	3/4"	CH_VTCROCE_M08

SAUTER
VDI 40

MODULO MOTORIZZATO ORIENTABILE 0-90° VDI40 DIN 5482
0-90° adjustable angle driven tool VDI40 DIN 5482
Angetriebenes Werkzeug schwenkbar 0-90° VDI40 DIN 5482



M.T. srl

Via Casino Albini 480
Tel. 0541/956034-957884
47842 S. GIOVANNI IN M. (RN)
e-mail: mima@mtmarchetti.com
http://www.mtmarchetti.com

PRODUZIONE MODULI ROTANTI



PAGINA SAU016-3-50

03/2015